



Mercedes-Benz

Mercedes-Benz Sprinter PRO 419 CDI





SPECIFICATION

GENERAL

- Model: Mercedes-Benz Sprinter PRO 419 CDI
- Model Year: 2024
- Vehicle Type: High Roof Panel Van (907/910)
- Drive Type: AWD – All-Wheel Drive (with torque-on-demand)
- Engine: 2.0L Turbo Diesel, 4-Cylinder (OM 654)
- Power Output: 190 HP (140 kW)
- Transmission: 9G-TRONIC Automatic Gearbox
- Emissions Standard: Euro VI
- Gross Vehicle Weight: 4,100 kg
- Wheelbase: 3,665 mm (standard)
- Steering: Left-hand drive
- Fuel Tank Capacity: 93 litres
- Country of Origin: Germany
- Market Validity: GCC (United Arab Emirates)
- Seating Configuration: 2 seats (driver + passenger)
- Color: Arctic White (MB 9147)

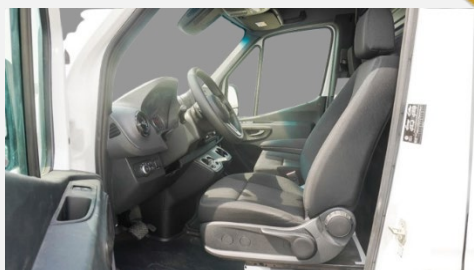
EXTERIOR

- Body Features:
 - High roof
 - Steel wheels 6.5 J x 16
 - Sliding side door (right side)
 - Hydraulic jack
 - Rear towing eye
 - Additional bodysheet reinforcements
 - Rear grab and entrance handles for ease of access
 - Adaptive brake light & 3rd brake light
 - Exterior mirrors without indicators
 - Safety & Visibility:
 - Rain sensor
 - Headlight assistant
 - ECO Start/Stop function
 - Cruise control
 - Speed limit warning system
 - Airbags (driver & co-driver)
-



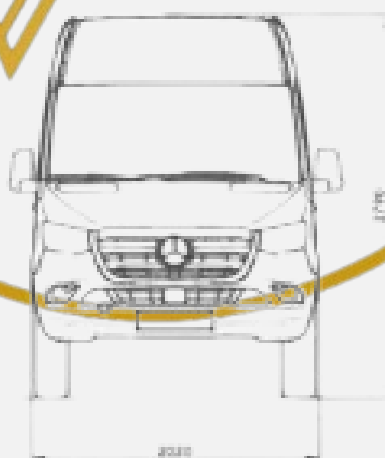
INTERIOR

- Comfort & Convenience:
 - MBUX Multimedia System
 - Digital radio (DAB)
 - Ambient air conditioning (semi-automatic – TEMPMATIC)
 - Heat-insulating windshield with band filter
 - Full-length partition behind front seats
 - Shelf above windshield
 - Under-cockpit storage compartment
 - Additional 12V power outlet
 - Cup holders (front)
- Functionality & Equipment:
 - Multifunction steering wheel
 - Adjustable steering (height and rake)
 - Speedometer in km/h
 - USB socket (5V)
 - Instrument cluster with colour display
 - Hill-Start Assist
 - HOLD function
 - Active Brake Assist
 - Crosswind Assist
 - Seatbelt reminders (driver & co-driver)
 - Warning triangle
 - Temperature indicator
 - Disconnection relay for auxiliary battery
 - Secondary battery for retrofit use
 - Parameterizable special control module
 - BB signal access point (cockpit)



[illegible]

Drawing front view



Dimensions are subject to a tolerance of $\pm 3\%$