



2026 Nissan Patrol Platinum City



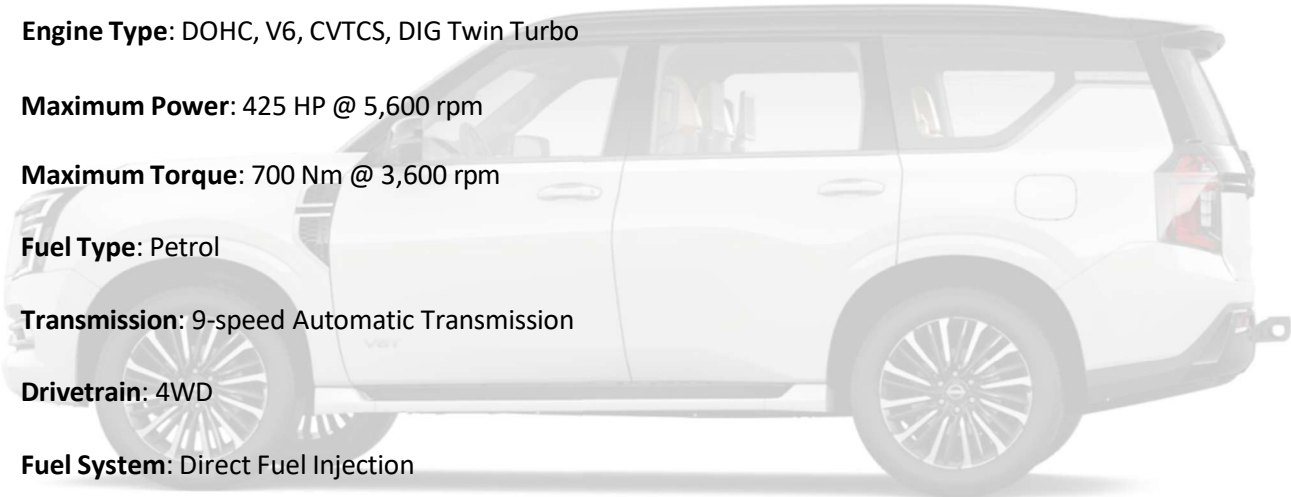
SPECIFICATION

ODEL YEAR :	2026
BODY TYPE :	SUV
AXLE :	AWD
FUEL TYPE :	PETROL




TECHNICAL

Engine & Transmission

- **Engine Type:** DOHC, V6, CVTCS, DIG Twin Turbo
 - **Maximum Power:** 425 HP @ 5,600 rpm
 - **Maximum Torque:** 700 Nm @ 3,600 rpm
 - **Fuel Type:** Petrol
 - **Transmission:** 9-speed Automatic Transmission
 - **Drivetrain:** 4WD
 - **Fuel System:** Direct Fuel Injection
- 

Dimensions & Capacities

- **Fuel Tank Capacity:** 97 litres
 - **Overall Length with Pintle Hook:** 5,350 mm
 - **Overall Width with Mirrors:** 2,350 mm
 - **Overall Height (Unladen):** 1,945 mm
 - **Wheelbase:** 3,075 mm
- 

Brakes

- **Front Brakes:** Ventilated Discs with Twin-Piston Swing-Caliper
- **Rear Brakes:** Ventilated Discs with Single-Piston Swing-Caliper

Suspension

- **Front:** Independent, Double Wishbone, Air Spring with Electric Shock Absorber
 - **Rear:** Independent, Double Wishbone, Air Spring with Separate Electric Shock Absorber
-

Wheels & Tires

- **Wheel Size:** 22" Machine-Cut Alloy Wheels
-

Interior Features

- **Upholstery:** Tan Genuine Quilted Leather
 - **Steering Wheel:** Leather, Electric Tilt & Telescopic with Memory
 - **Display:** Twin 14.3-inch Monolith Display
 - **Gear Shifter:** Piano Button E-Shifter
 - **Paddle Shift Levers**
 - **Remote-Controlled Central Door Locking**
 - **Push Start/Stop Button**
 - **Cruise Control:** Standard and Intelligent Cruise Control
-

Seating

- **Driver Seat:** 8-way Power Adjustable with Memory, Lumbar Support, and Massage Function
 - **Passenger Seat:** 4-way Power Adjustable with Lumbar Support and Massage Function
 - **Front Seats:** Climate-Controlled
 - **Second Row:** Manual Pitch & Slide with Remote Folding
 - **Third Row:** Power Recline with One-Touch Auto Fold-Up/Down
 - **Cooling Box:** Integrated for front passengers
 - **Ambient Interior Lighting:** Multi-Color with Personal Reading Lamps for Rear Seats
-

Technology & Connectivity

- **Infotainment:** AM/FM/DVD/MP3 System
- **Sound System:** 12-Speaker Klipsch Premium Audio
- **Rear Seat Entertainment Screens**

- **Heads-Up Display (HUD)**
- **Wireless Charger**
- **Smart Rearview Mirror**
- **Nissan iKey with Memory & Remote Engine Start**

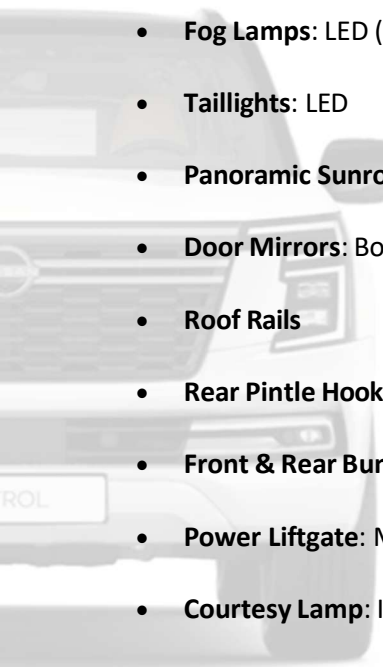


Climate Control

- **Zones:** 3-Zone Climate Control with Memory and Rear Cooler
- **Air Filtration:** Biometric Cooling, Ionizer, and Advanced Air Filter

Exterior Features

- **Headlights:** Low Beam & High Beam LED with Adaptive Driving Beam (ADB)
- **Daytime Running Lights:** LED
- **Fog Lamps:** LED (Front)
- **Taillights:** LED
- **Panoramic Sunroof**
- **Door Mirrors:** Body-Colored, Power Adjustable, Auto Folding, Reverse Auto Tilt with Memory
- **Roof Rails**
- **Rear Pintle Hook**
- **Front & Rear Bumpers:** Platinum City Design
- **Power Liftgate:** Motion-Sensing
- **Courtesy Lamp:** Iconic Design



Safety Features

- **Airbags:** Driver, Passenger, Side, Curtain, and Driver Knee Airbags
- **Braking:** ABS + EBD, Brake Assist
- **Traction & Stability:** Hill Descent Control, Hill Start Assist, Vehicle Stability Control

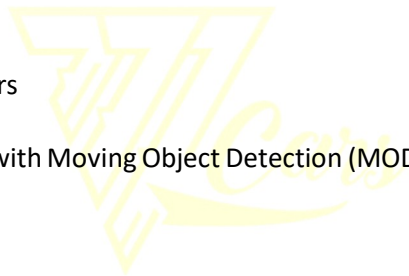
- **Advanced Driver Assistance:**

- Predictive Forward Collision Warning
- Automatic Emergency Braking (With Pedestrian Detection)
- Lane Departure Warning & Intervention
- Blind Spot Warning & Intervention
- Rear Cross-Traffic Alert
- Rear Automatic Emergency Braking
- ProPILOT with Lane Keep Assist
- Frontal Intersection Assist
- Rear Differential Locking



Parking & Surround View

- **Sensors:** Front & Rear Parking Sensors
- **Cameras:** 3D Around View Monitor with Moving Object Detection (MOD)
- **Invisible Hood View**
- **Parking Spot Memory**



Additional Features

- **Adaptive Driving Beam (ADB)**
- **Tire Pressure Monitoring System (TPMS)**
- **Auto Hazard Post Collision**
- **Nissan Immobilizer and Alarm**





