



TOYOTA

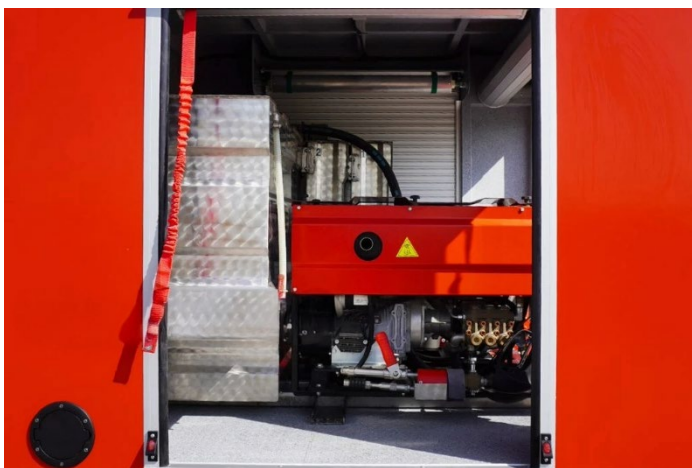
Toyota Land Cruiser 4x4 Rapid Intervention Vehicle – Enclosed Firefighting RIV500
(Double Cabin)





Firefighting System – Skid Unit RIV500

- **Engine:** Lombardini Diesel, 17 HP
- **Pump:** Direct-coupled high-pressure pump
- **Performance:** 30–32 L/min @ 150 bar
- **Water Tank:** 500 L stainless steel
- **Foam Tanks:** Dual 30 L tanks
- **Control Panel:** Easy operation with pressure & foam settings
- **Hose & Gun:** 40 m HP hose reel with multi-function attack gun (12–15 m reach)





Vehicle Specifications

Make / Model

- Toyota Land Cruiser Pick-Up
- Drive Type: 4WD (Four-Wheel Drive)
- Transmission: Automatic or Manual

Dimensions & Exterior

- Color: Fire Red
- Double Cabin – 4 Doors, 5 Seats
- Wheel Size: 17"
- Built-in Winch
- Enclosed Rescue Body with multiple lockable roller-shutter compartments
- High-visibility markings & integrated emergency lighting system

Interior & Comfort

- Seating Capacity: 5 (Double Cabin)
- Steering: Left-Hand Drive
- Air Conditioning
- Cup Holders
- Power Locks & Windows
- Electric Side Mirrors

Infotainment & Connectivity

- Tuner/Radio

Safety & Assistance

- ABS (Anti-lock Braking System)
- Front & Side Airbags
- Hill Descent Control
- Traction Control
- Differential Lock (Deflock)